

Common Ferns of the Arid West Region

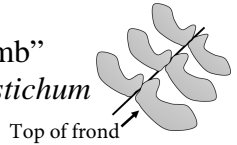


***Caution-This is a limited species key
NWPL**

1. Ferns with 2 types of fronds* (sterile and fertile) as separate leaf structures *Cryptogramma*

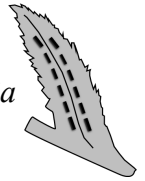
1. Ferns with only one type of frond, with or without fertile sori on the single frond type.

2. Ferns with once cut fronds, pinnae with a “thumb” shape at the base *Polystichum*



2. Ferns with twice or three times (thrice) cut fronds.*

3. Ferns with twice cut fronds and elongated sori arranged in chains** *Woodwardia*



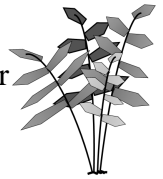
3. Ferns with thrice cut fronds, sori not elongated and arranged in chains.

4. Ferns with scaly bases on the greenish stem/frond. *Dryopteris*



4. Ferns lacking scales on the stem bases.

5. Fronds divided from the base forming a cluster of fronds.



6. Fronds wider than 6 inches and taller than 1 foot *Athyrium*

6. Fronds smaller than 6 inches wide and one foot tall *Cystopteris*

5. Fern fronds divided from a central erect stalk and/or from near the base but not forming clusters of fronds.

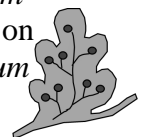
7. Fronds divided into circular or semi-circular shape with black, forked stalks. *Adiantum*



7. Fronds not divided into circular shape with a black stalk.

8. Fronds tall and coarse, sori located on margins of pinnae** *Pteridium*

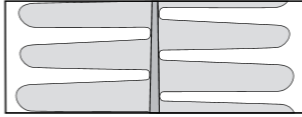
8. Fronds not tall and coarse, sori located on flat surface of pinnae . . . *Gymnocarpium*



* Frond(s) is equal to saying leaf or leaves. The smaller leaf units on a frond are referred to as pinnae.

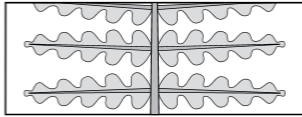
Leaflet Shapes

Once-Cut Fern



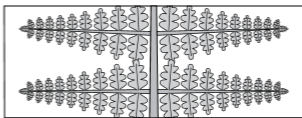
Simple
Leaflet

Twice-Cut Fern

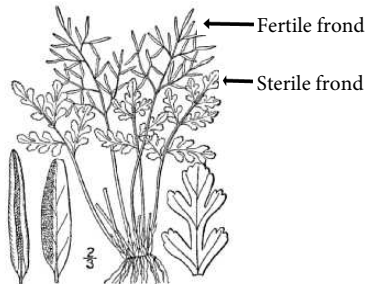
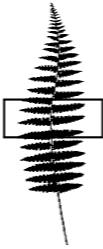


Leaflet with
Subleaflets
(pinnules)

Thrice-Cut Fern

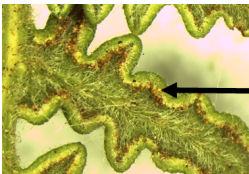


Subleaflets
(pinnules)
with lobes



USDA-NRCS PLANTS Database / Britton, N.L., and A. Brown. 1913. An illustrated flora of the northern United States, Canada and the British Possessions. 3 vols. Charles Scribner's Sons, New York. Vol. 1: 32.

** Sori are clusters of sac like structures known as sporangia that contain spores, a reproductive unit of ferns.



Sori on
margins
of pinnae



Elongated
sori
arranged
in chains

© Gerald D. Carr

Cryptogramma stelleri
Fragile Rockbrake (FACU)



Polystichum lonchitis
Northern Holly Fern (FACU)



Polystichum munitum
Pineland Sword Fern (FACU)



Dryopteris expansa
Spreading Wood Fern (FACW)



Woodwardia fimbriata
Giant Chain Fern (FACW)



Athyrium americanum
American Alpine Lady Fern (FAC)



Athyrium cyclosorum
Western Lady Fern (FAC)



Cystopteris fragilis
Brittle Bladder Fern (FACU)



Adiantum aleuticum
Aleutian Maidenhair (FAC)



Pteridium aquilinum
Northern Bracken Fern (FACU)



Gymnocarpium dryopteris
Northern Oak Fern (FACU)



Photo Credits:

¹Harris, Jessie. Used with permission. Further use requires written permission from photographer.

²Legler, Ben. Used with permission. Further use requires written permission from photographer.

³Carr, Gerald. 2013. Woodwardia Fimbriata. Digital image. Oregon Flora Image Project. University of Hawaii: Botany Department. Web. 2 Feb. 2016. <http://www.botany.hawaii.edu/faculty/carr/ofp/woo_fim.htm>.

⁴Oswald, Vernon H. Used with permission. Further use requires written permission from photographer.

⁵Harrod, Richy J. Used with permission. Further use requires written permission from photographer.

⁶Slichter, Paul. 2008. Oak Ferns of Mt. Adams: The Genus *Gymnocarpium*. Digital image. Flora & Fauna Northwest. Gresham High School. Web. <<http://science.halleyhosting.com/nature/>>.

⁷Robert H. Mohlenbrock, hosted by the USDA-NRCS PLANTS Database / USDA NRCS. 1992. Western wetland flora: Field office guide to plant species. West Region, Sacramento.