

All Things Wetland Plants

Episode 3: What is Common?

presenter:

Jennifer Gillrich

U.S. Army Corps of Engineers
Engineer Research and Development Center
Cold Regions Research and Engineering Laboratory



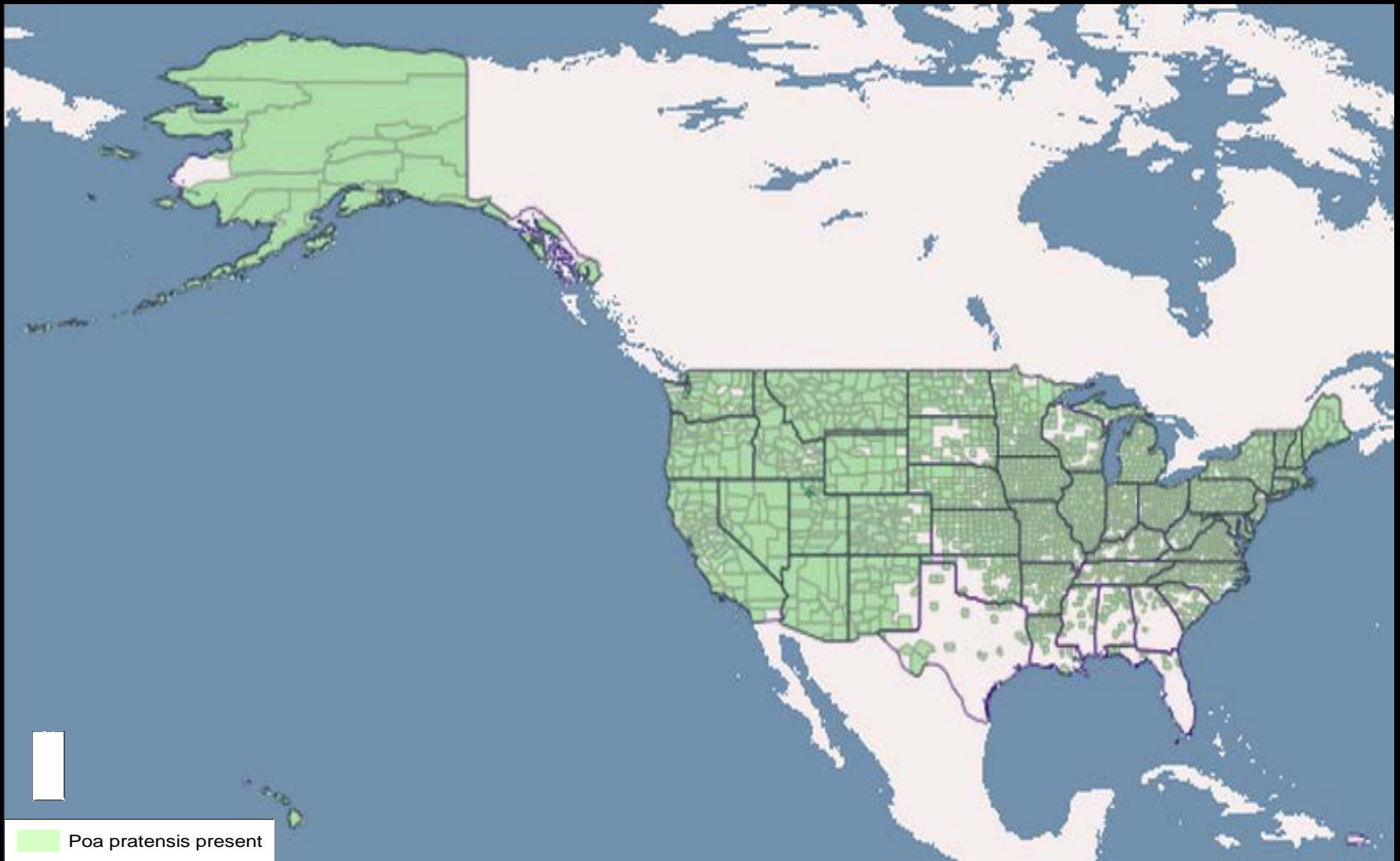


Figure 1. At a national scale, *Poa pratensis* (Kentucky blue grass), is considered common because it occurs in more than half the counties in the United States and its territories. It belongs to the Poaceae, one of top three most common wetland plant families.

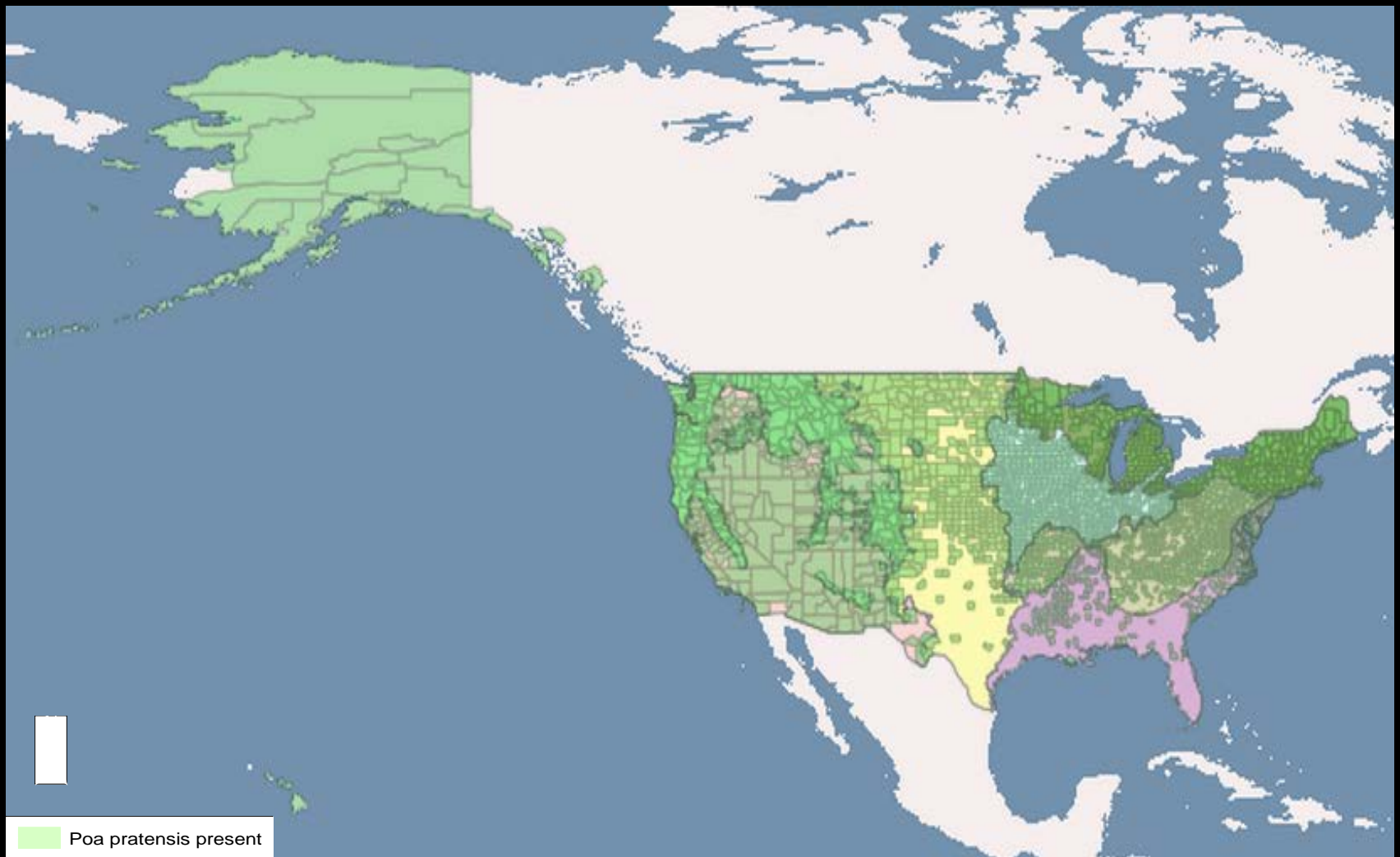


Figure 2 . At the scale of Corps wetland delineation regions, *Poa pratensis* (Kentucky blue grass) is considered common in most regions. It is less common in the Atlantic and Gulf Coastal Plain (purple) and the Hawaii (green) regions.

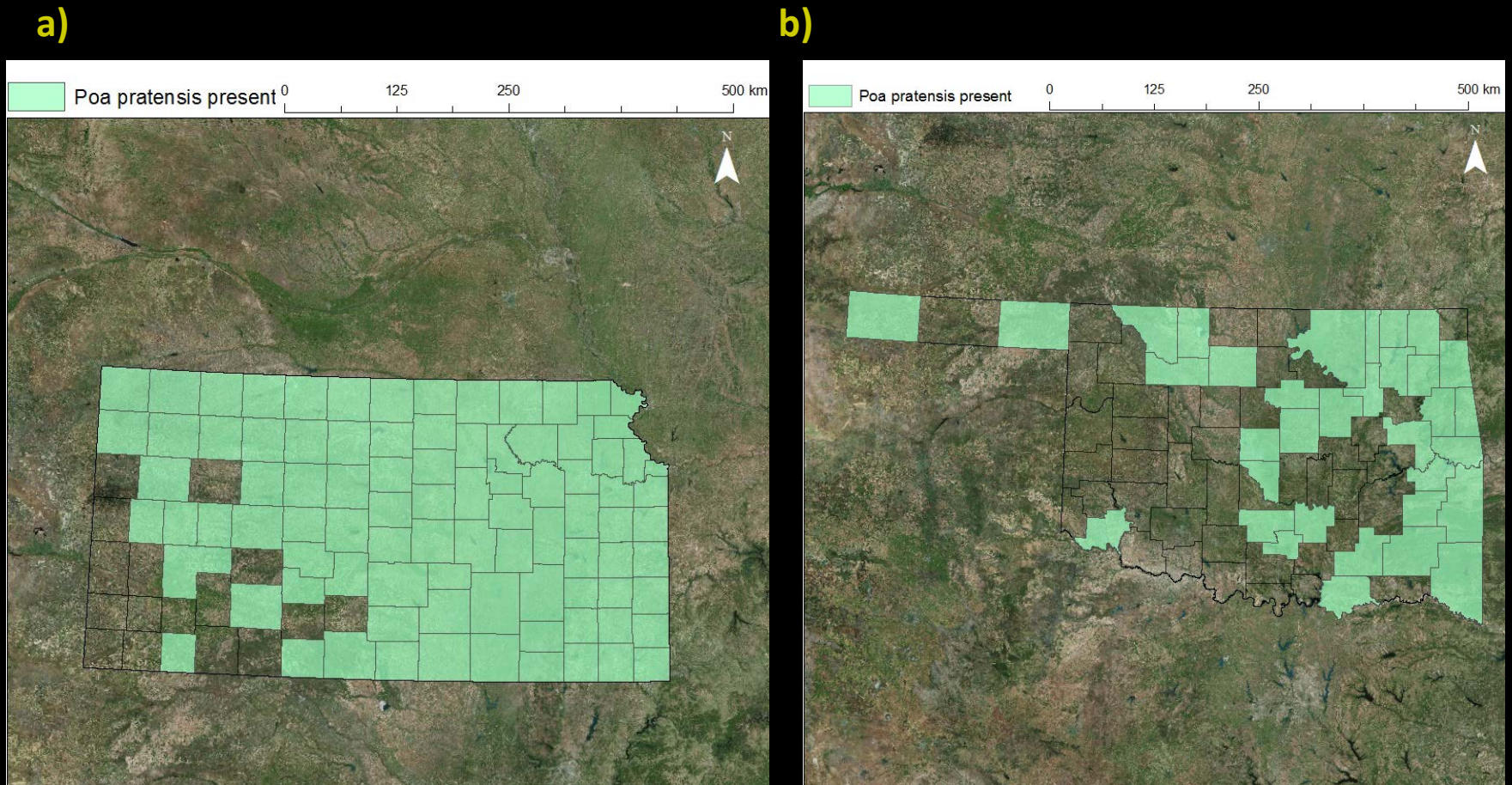
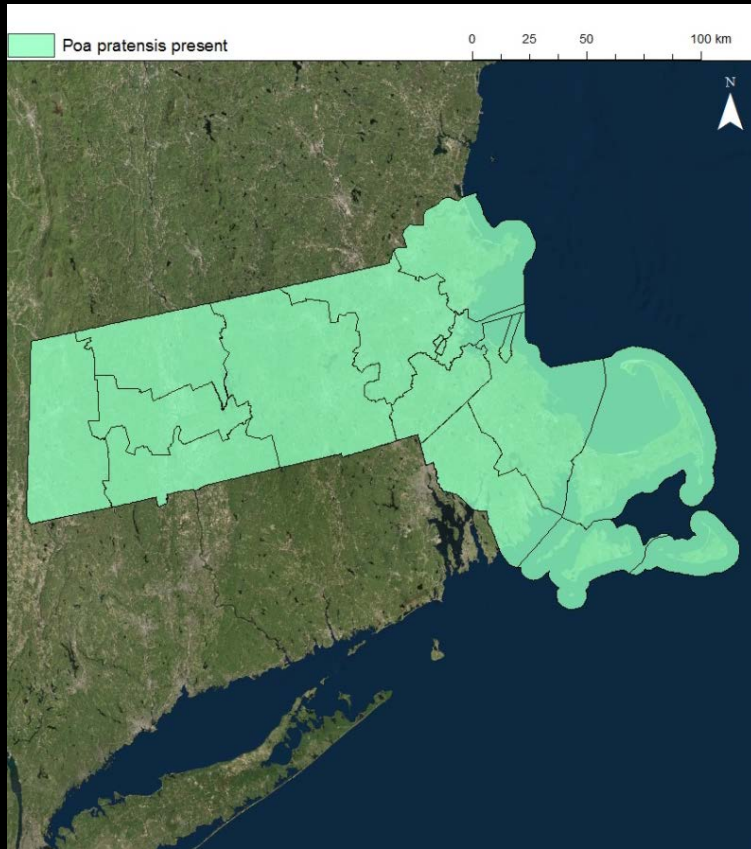


Figure 3. At finer spatial scales, such as individual states, *Poa pratensis* may or may not be considered common. It occurs in more than half the counties in Kansas (a), but less than half in adjacent Oklahoma (b).

a)



b)

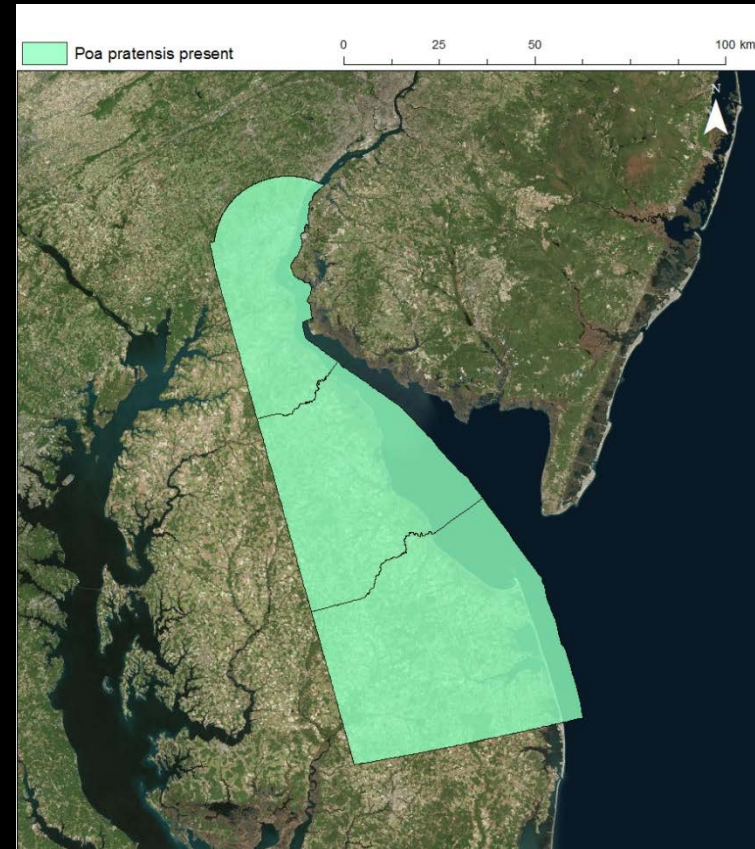


Figure 4. As state area and number of counties decreased, the criterion for common became more stringent. In Massachusetts, species were considered common if they occurred in 10 of 14 counties. In Delaware, species were considered common if they occurred in all three counties in the state. *Poa pratensis* was common in both states.

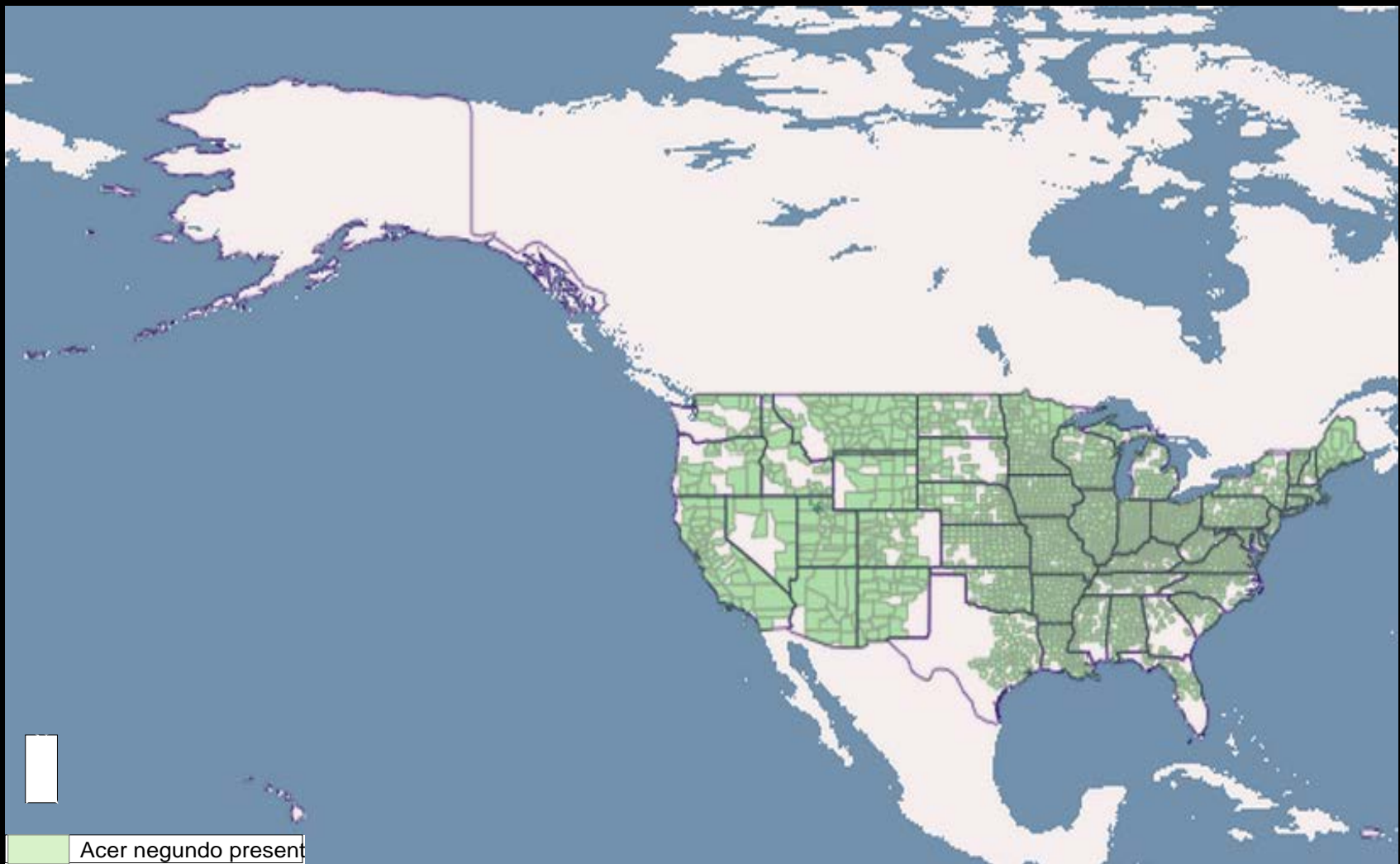


Figure 5. *Acer negundo* (Boxelder) is common nationally and in most regions, but it is not on common taxa lists because it belongs to a family with few wetland species. Regional keys to common woody plants will address this type of common species.

Questions ? Comments?

Contact us:

nwpl@usace.army.mil

Cite this video:

Gilrich, Jennifer. "Episode 3: What Is Common?" *All Things Wetland Plants*. U.S. Army Corps of Engineers, US Army Engineer Research and Development Center, Cold Regions Research and Engineering Laboratory, 15 Sept. 2015. Web. Accessed on _____.