

# All Things Wetland Plants

## Episode 2b: Identifying Ferns

with

**Paul Wolf**

Professor, Utah State University

and

**Bob Lichvar**

U.S. Army Corps of Engineers

Engineer Research and Development Center

Cold Regions Research and Engineering Laboratory



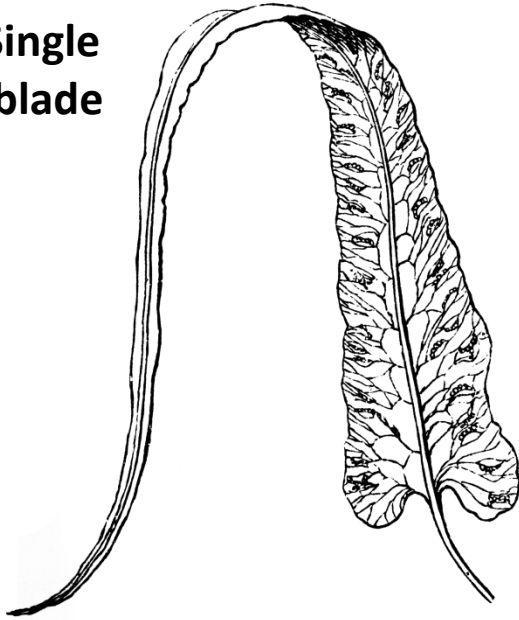


**Fern growth forms: 1) clumped, 2) scattered, 3) epiphytic, and 4) aquatic.**



Arrangement of vascular bundles in *Polystichum* spp.

**Single  
blade**



**2x dissected**

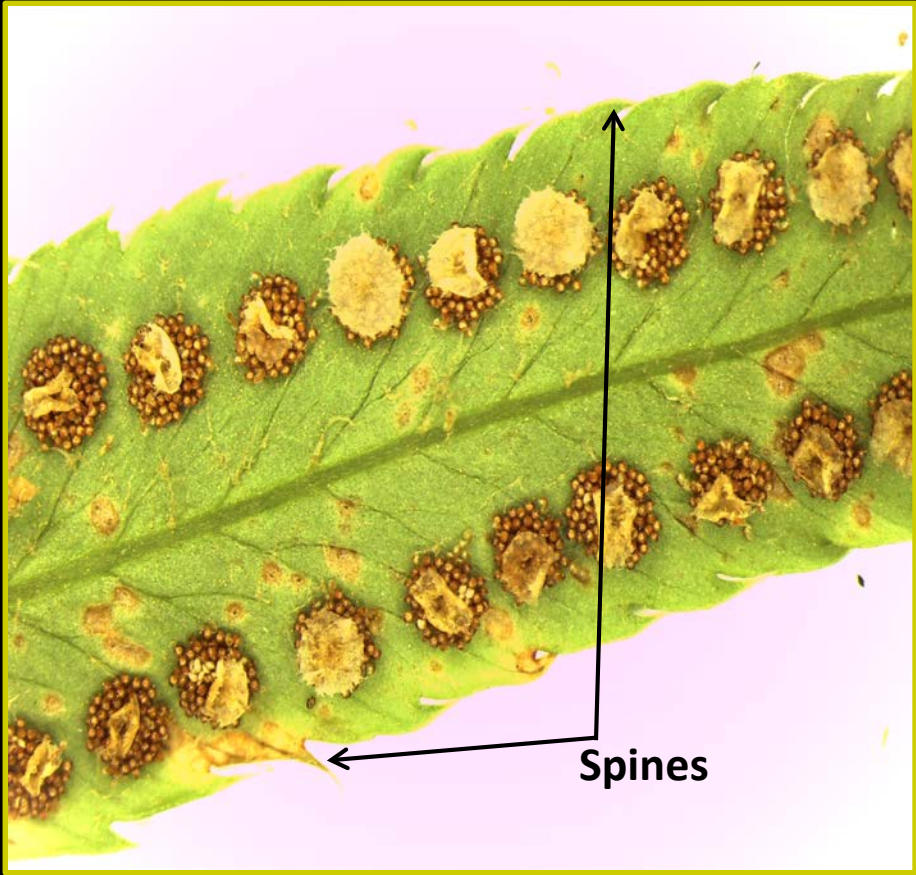


**1x dissected**



**3 x dissected**





**Fertile fronds**

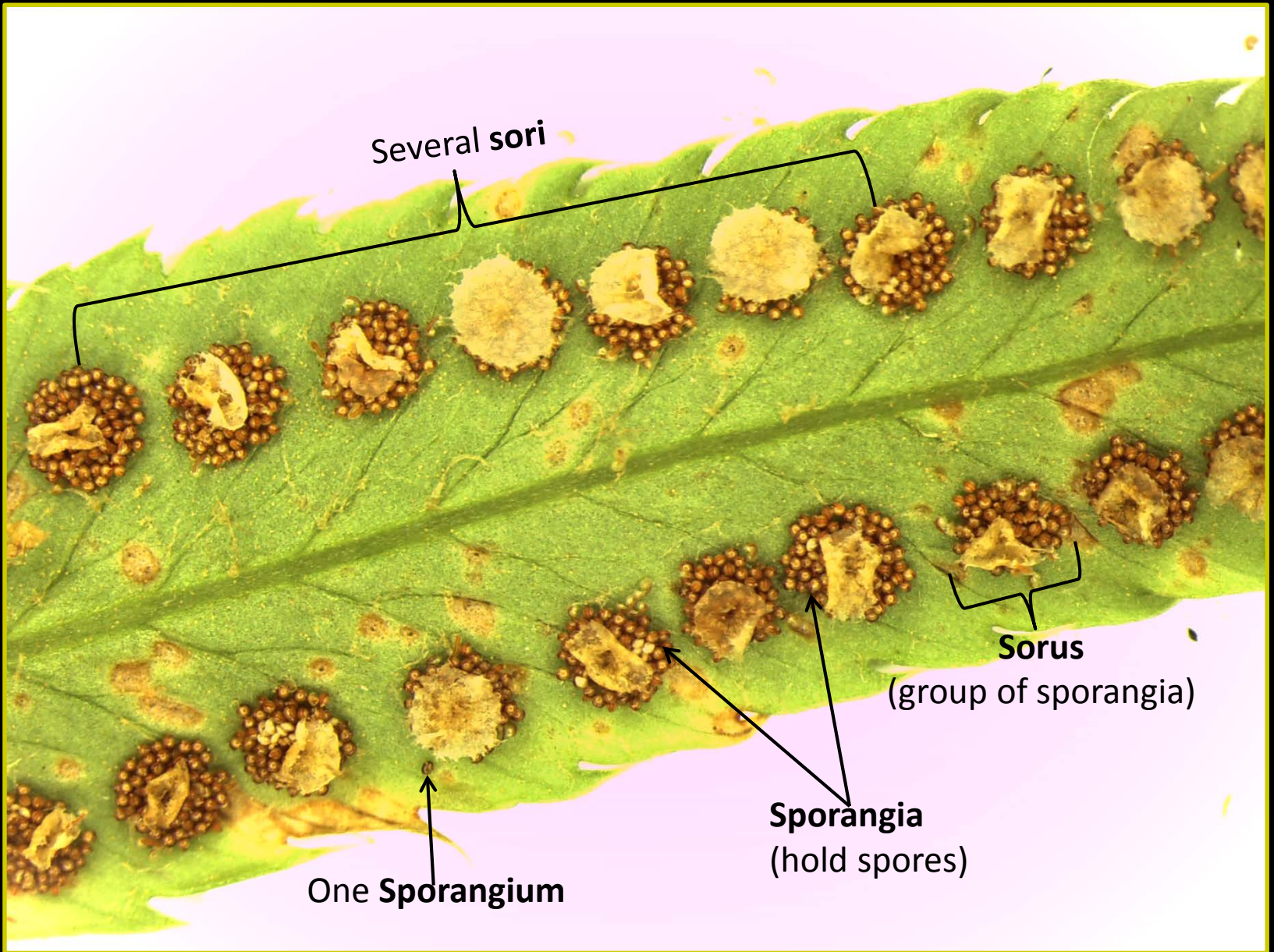


**Sterile fronds**

**Fertile frond**



**Sterile fronds**



Several sori

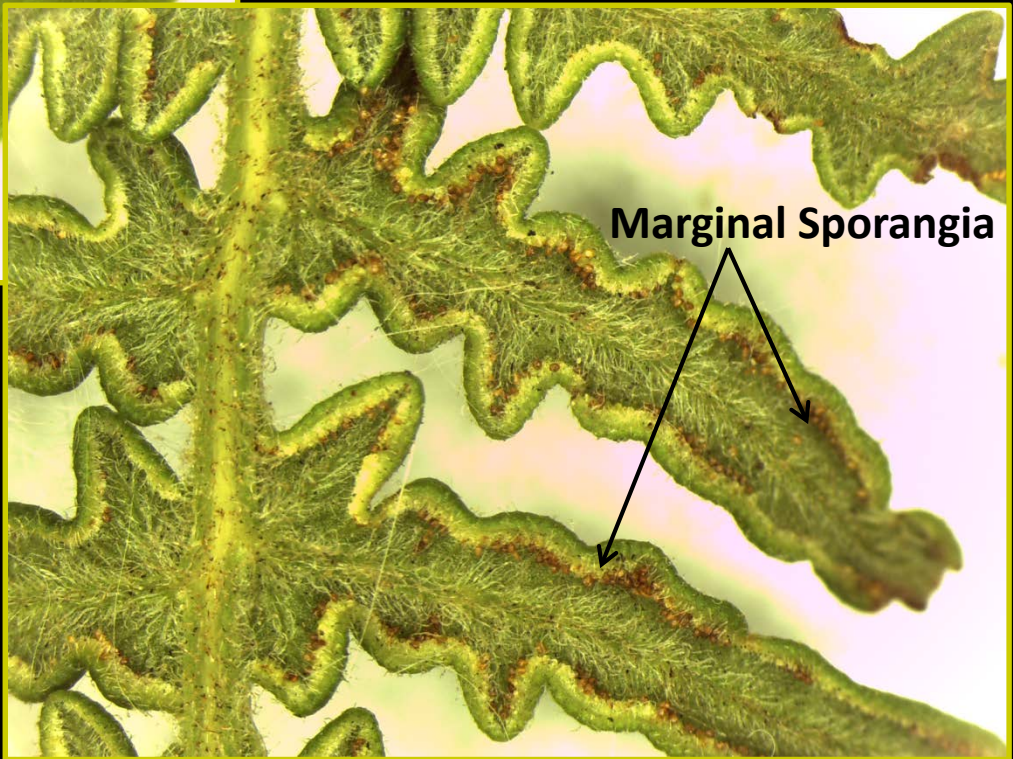
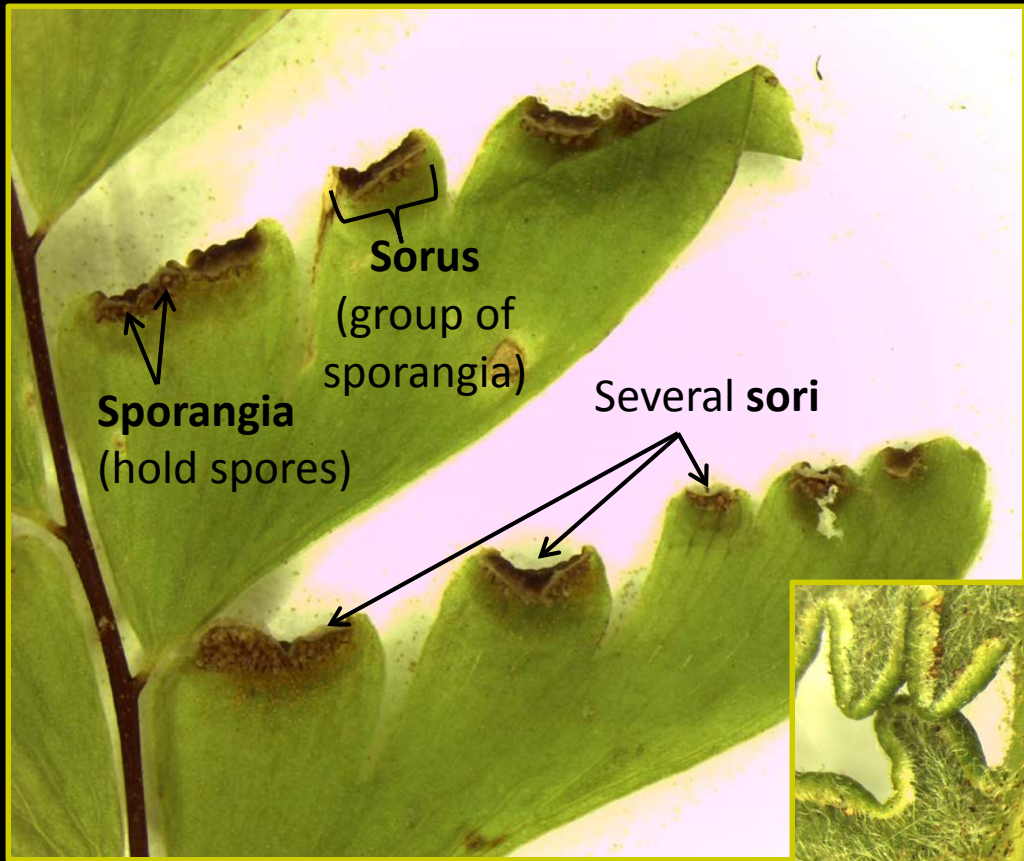
Sorus

(group of sporangia)

Sporangia

(hold spores)

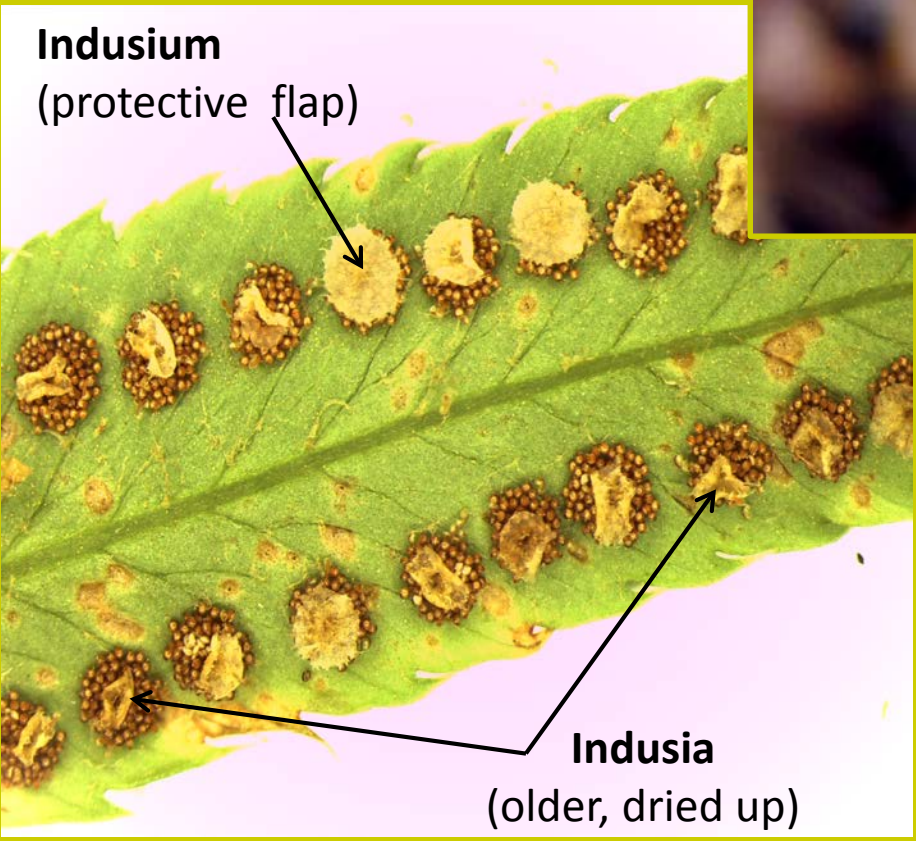
One Sporangium





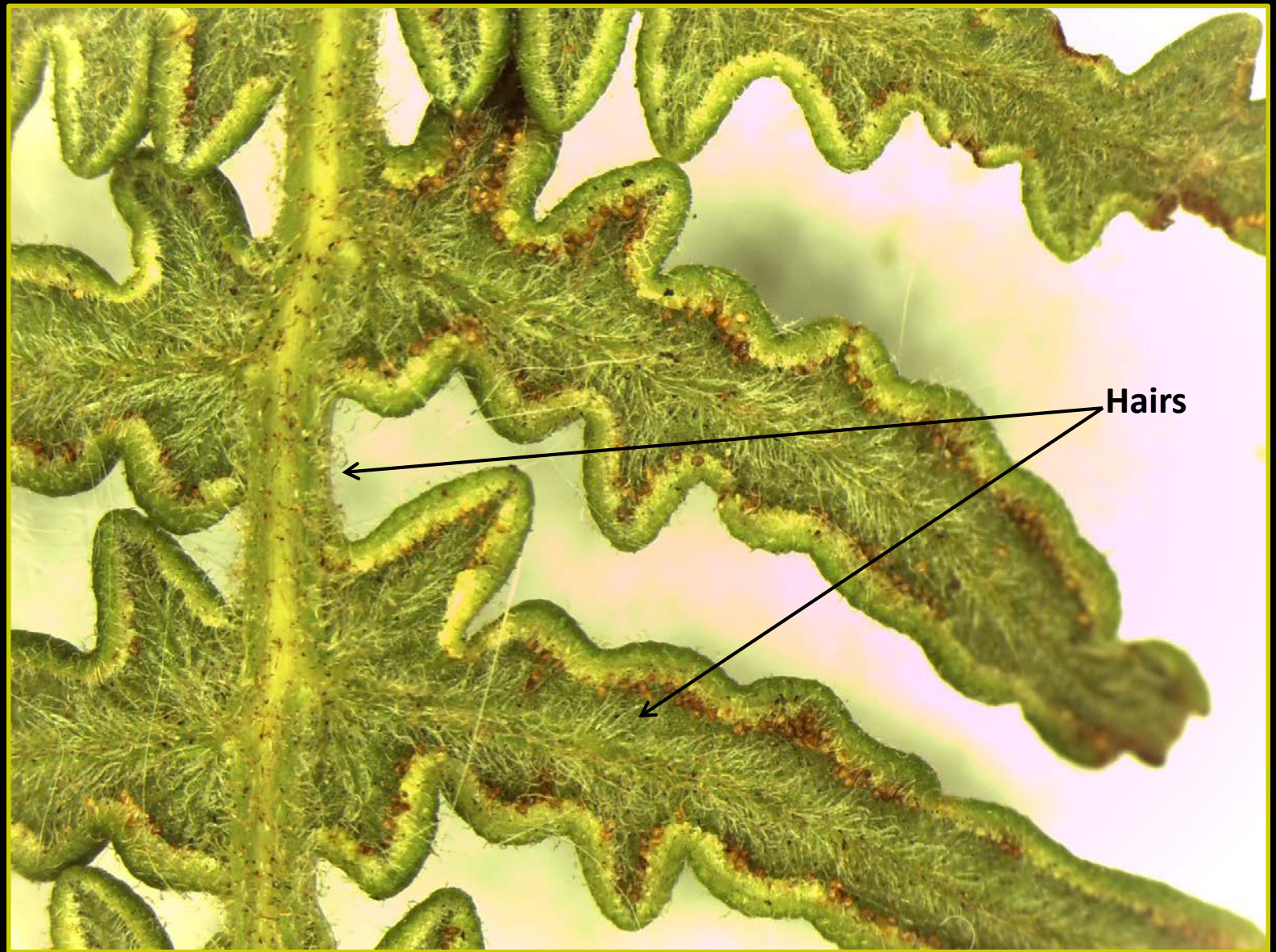


No Indusia

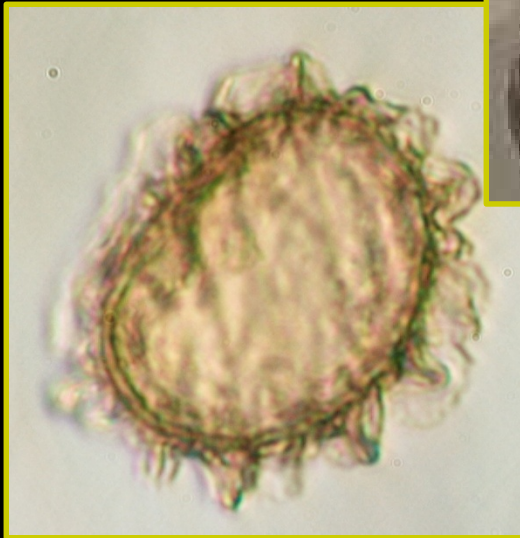


Indusium  
(protective flap)

Indusia  
(older, dried up)

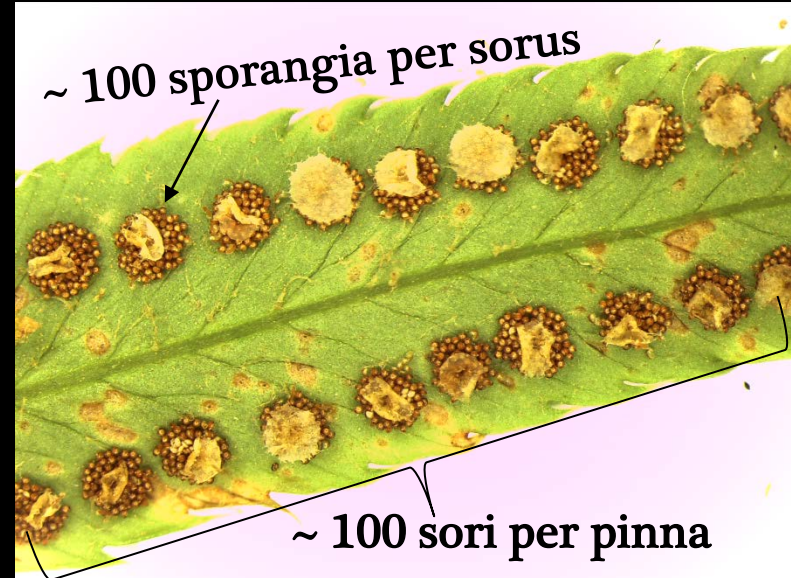
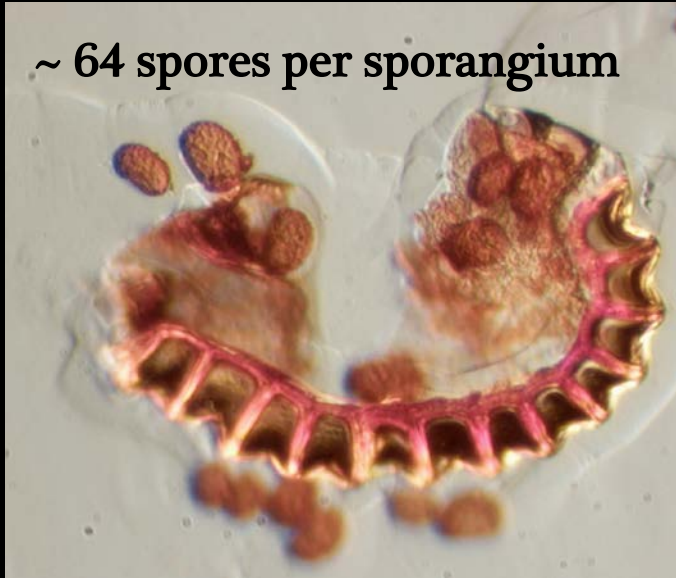


Hairs on the underside of a bracken fern (*Pteridium* spp. ) frond.



Examples of fern spores

A single sword fern (*Polystichum munitum*) may produce millions of spores.



~ 100 pinna per frond



~ 50 fronds per plant



1) On this hillside powerline where woody plants are regularly cut and treated with herbicide bracken fern (*Pteridium aquilinum*), hay scented fern (*Dennstaedtia punctilobula*), interrupted fern (*Osmunda claytonia*), and sensitive fern (*Onoclea sensibilis*) are common, 2) *Salvinia molesta* invades aquatic systems, choking out native plants.

# Questions ? Comments?

Contact us:

[nwpl@usace.army.mil](mailto:nwpl@usace.army.mil)

**Cite this video:**

Wolf, Paul and Robert Lichvar "Episode 2b: Identifying Ferns" *All Things Wetland Plants*. U.S. Army Corps of Engineers, US Army Engineer Research and Development Center, Cold Regions Research and Engineering Laboratory, 30 Sept. 2015. Web. Accessed on \_\_\_\_\_.